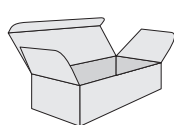
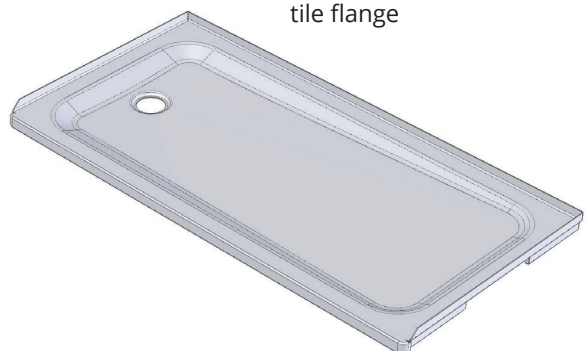


## Schmidlin Showerbase Installation

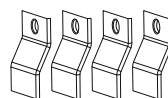


Delivery content

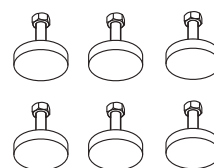


Shower base with optional  
tile flange

Optional installation parts

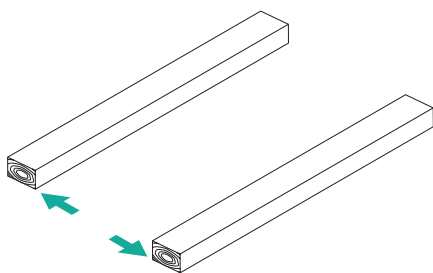


101196 brackets



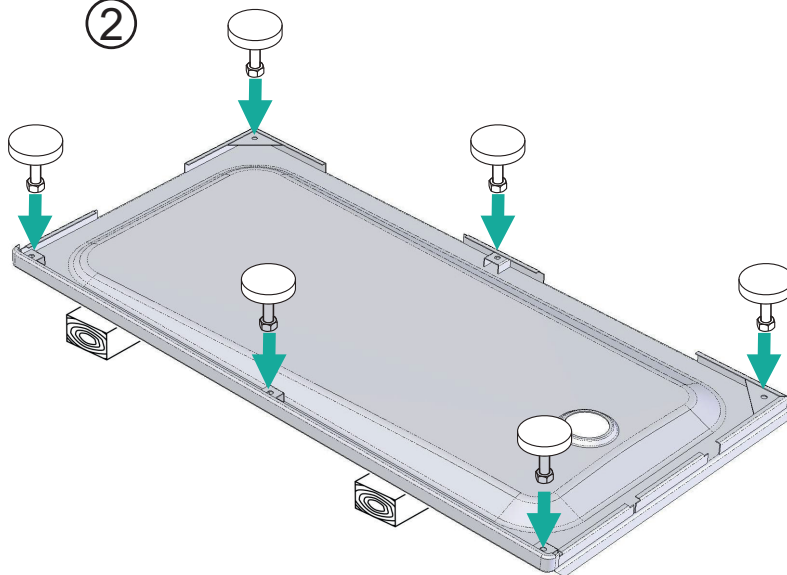
109855 adj. legs (superflat)  
111466 adj. legs (flat)

①



Prepare installation area

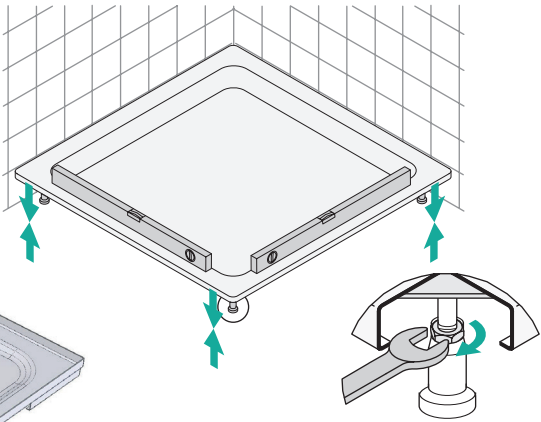
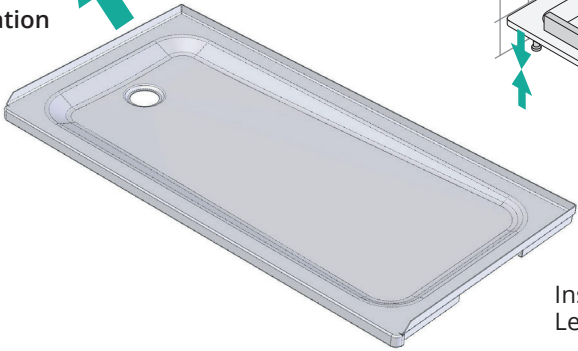
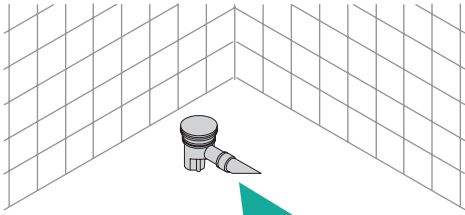
②



Turn shower base upside down  
Install 6 legs and level shower base

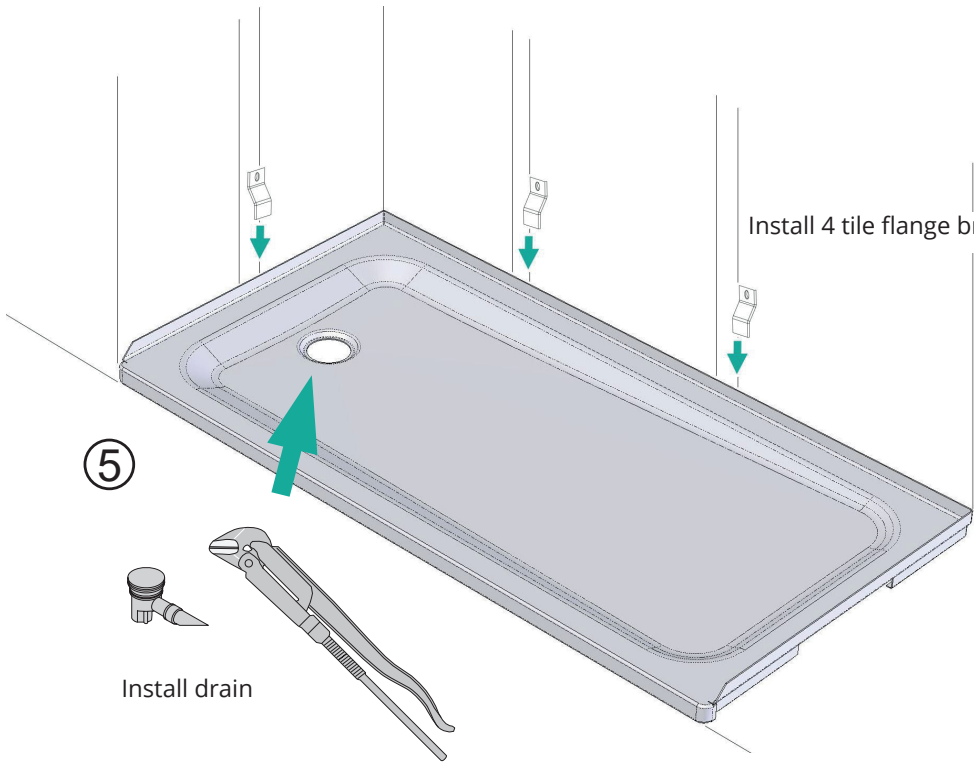
③

Prepare drain in installation  
alcove or corner



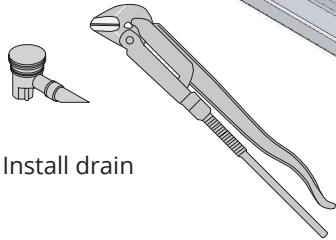
Install shower base in corner  
Level shower base finally

④



Install 4 tile flange brackets

⑤



Install drain