

Material

- Glazed titanium steel

Features

- Slip resistant surface ANTIGLISS included

Compatible drain fittings

- Schmidlin, ABS, 117240
- OS&B ABS, SD35
- OS&B PVC, SD5135



| Variant no | Color | Tile flange | |
|------------------------------------|----------------|---|--|
| <input type="checkbox"/> 2456-0002 | C1 white gloss | TF00 no tile flange | |
| <input type="checkbox"/> 2456-0003 | C1 white gloss | TF01 Tile flange on 3 sides, drain left | |
| <input type="checkbox"/> 2456-0004 | C1 white gloss | TF02 Tile flange on 3 sides, drain right | |
| <input type="checkbox"/> 2456-0005 | C1 white gloss | TF03 Tile flanges left / back, drain left | |
| <input type="checkbox"/> 2456-0006 | C1 white gloss | TF04 Tile flanges right / back, drain right | |

Colors

- ☐ C058 White matte
- ☐ C__ Color class C, D, E



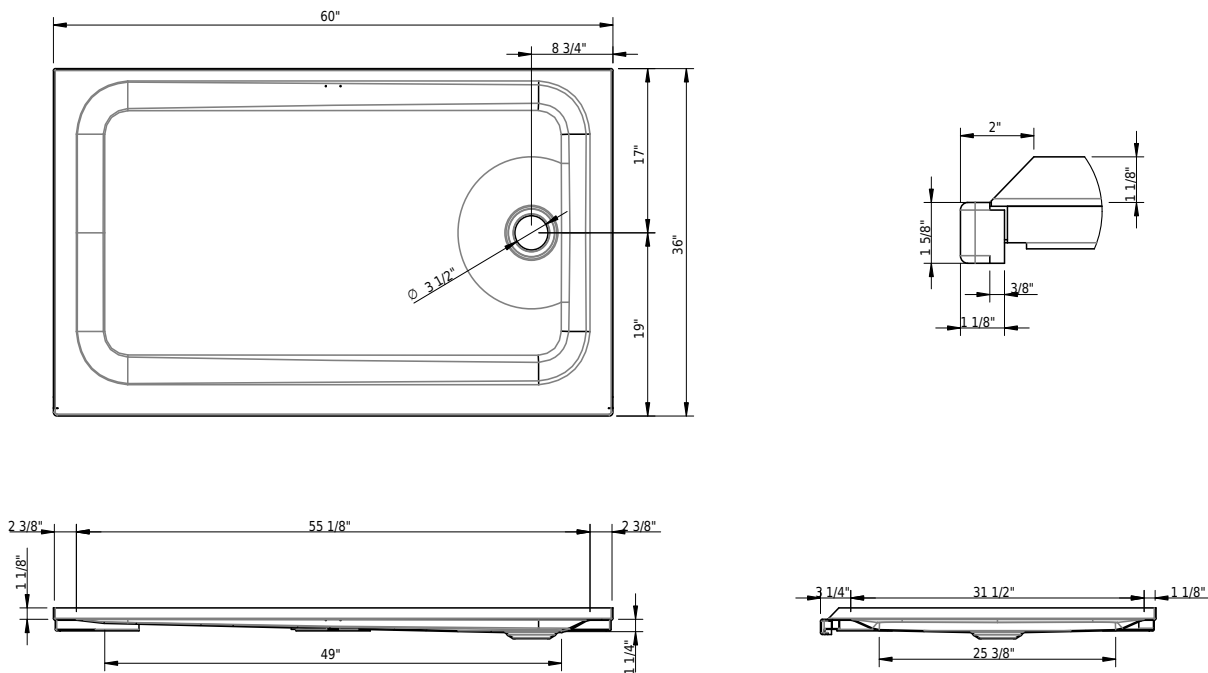
➤ color list

Options

- ☐ CE1 CLEANEFFECT

Accessories

- ☐ 117005 Schmidlin 2-corner tape-flange, 155" (4m)
- ☐ 101196 Schmidlin mounting angle for tile flange (SIA 181), 4 pieces



Technical Information

| | |
|----------------|-------------|
| Installation | corner |
| Drain location | drain right |
| Weight | 74 lbs |
| Drain opening | 3 1/2" |



➤ Installation Instructions

Standards / Codes

- This product complies with
- ASME A112.19.1 / CSA B45.2
- ASTM F462
- This product complies with
- ASME A112.19.1 / CSA B45.2
- ASTM F462



Meets the americans with disabilities act guidelines and ANSI A117.1 requirements for accessibility and usability - check local code. Install with seat at head end.

Notes

- Drain set not included
- Refer to installation instructions
- We recommend the use of Schmidlin adjustable installation feet

Important: Dimensions of fixtures are nominal and may vary within the range tolerances established by ANSI standard A112.19.4. These

09/15/2025 Subject to technical changes.

measurements are subject to change or cancellation. No responsibility is assumed for use of superseded or voided leaflet.